

# NO LINES IN THE WATER PRIOR TO 6:30 AM

Tournament Boundaries include the Atlantic Ocean waters between latitude lines N31-52-00 and N29-01-00. This area is approximately described as: 2 NM north of Ossabaw Inlet GA to 4 NM south of Ponce Inlet FL.

## TOURNAMENT NO WAKE ZONES: 200 YARDS UP AND DOWN STREAM OF MARINA

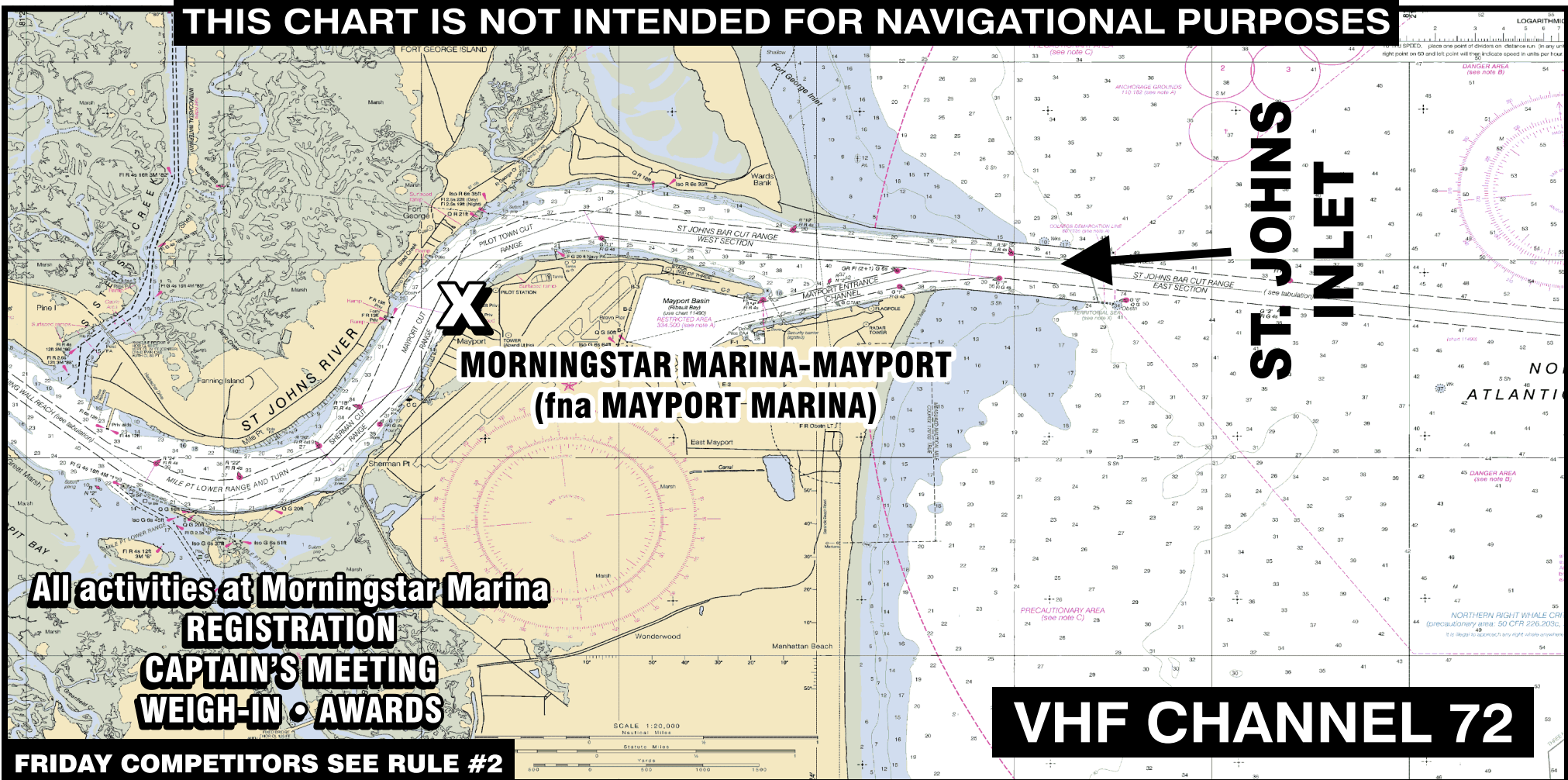
END OF WEIGH-IN LINE WILL BE DETERMINED BY VISUAL CHECK-IN. ALL BOATS WISHING TO WEIGH MUST BE WITHIN 200 YARDS OF MORNINGSTAR MARINA CONFIRMED BY VISUAL BOAT NUMBER IDENTIFICATION VIA VHF CHANNEL 72.

WEIGH-IN LINE OPENS AT 3:00 PM. (Friday & Saturday)

WEIGH-IN END OF LINE CLOSES AT 5:00 PM (Friday & Saturday)

EMERGENCY CONTACT PHONE (912) 258-3901 • AWARDS CEREMONIES 7:00 P.M. AT MORNINGSTAR MARINA-MAYPORT

**THIS CHART IS NOT INTENDED FOR NAVIGATIONAL PURPOSES**



**X**  
**MORNINGSTAR MARINA-MAYPORT**  
**(fna MAYPORT MARINA)**

**ST. JOHNS INLET**

**All activities at Morningstar Marina**  
**REGISTRATION**  
**CAPTAIN'S MEETING**  
**WEIGH-IN • AWARDS**

**VHF CHANNEL 72**

**FRIDAY COMPETITORS SEE RULE #2**